

# SKYLINK BATTERY PACK

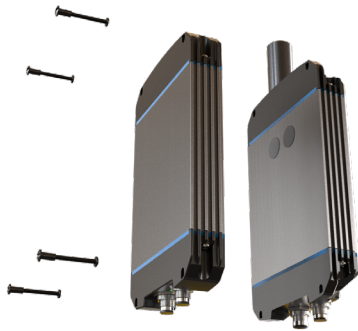
## QUICK START GUIDE

**PLEASE READ BEFORE DEPLOYMENT**

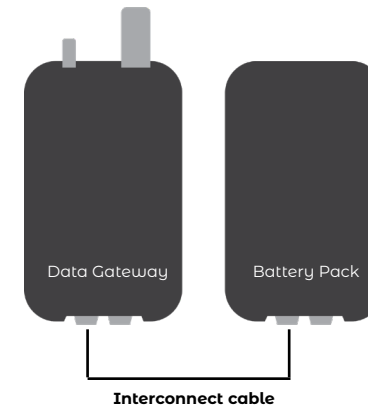


## STEP 1: ATTACH THE BATTERY

Bolt the SkyLink Battery Pack to the SkyLink Data Gateway. A permanent installation can be through mounted to a post by using the Data Gateway mounting bracket, or by screwing it to a wall.



The interconnect cable connects to the left-hand connector of the Data Gateway and the left-hand connector of the Battery Pack when looking at the front of both units.



## STEP 2: ATTACH THE INTERCONNECT CABLE

Connect the interconnect cable between the Battery Pack and the Data Gateway. There is one standard interconnect cable and three optional cables:

1. Standard 6" interconnect cable, PN 300697-1
2. Optional 72" interconnect cable, PN 300697-2
3. Optional 6" interconnect cable & Ethernet cable, PN 300697E-1
4. Optional 72" interconnect cable & Ethernet cable, PN 300697E-2

## STEP 3: ATTACH THE POWER INPUT CABLE

Connect the power input cable to the right-hand connector on the Battery Pack. For mobile use, this is a temporary connection to charge the battery and a permanent connection for fixed installations. The standard cable has an AC adapter and there is an optional DC cable:

1. Standard power input cable, PN 300698-AC
2. Optional power input cable, PN 300698-DC

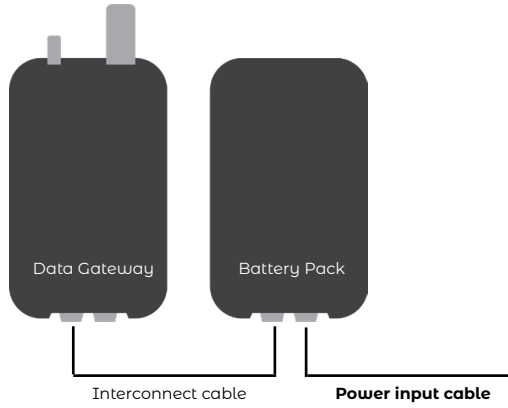


Questions? Contact us at [support@blueskynetwork.com](mailto:support@blueskynetwork.com)

+ 1 858-551-3894

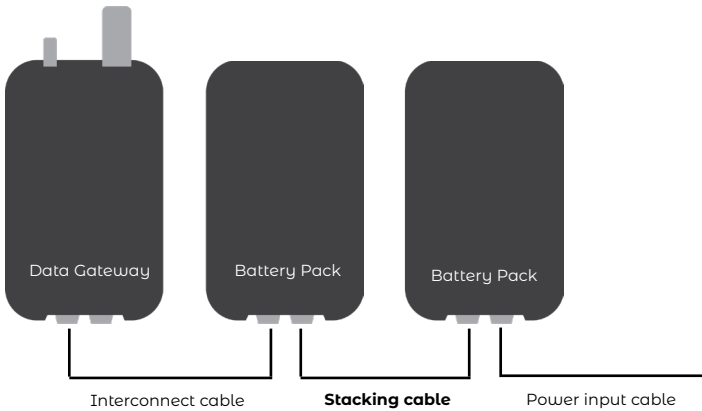
# SKYLINK BATTERY PACK QUICK START GUIDE

---



## BATTERY STACKING

To stack batteries, use the battery stacking cable, PN 300699, as shown below:



[www.blueskynetwork.com](http://www.blueskynetwork.com)

SKYLINK-BATTERY-PACK-QUICK\_START\_GUIDE-V1.1  
For customer use only. Not intended for further distribution.