

ASE RESILIENCE SOLUTION

Permanent-Satphone Comcenter Indoor-MC08



SUMMARY OF KEY FEATURES

- PROVIDES OFFICE/IN-BUILDING SOLUTION FOR IRIDIUM SATPHONE
- NON REMOVABLE
- PERFECT FOR HIGHLY TRAFFICKED AREAS
- EASY CONNECTION TO IRIDIUM ANTENNA FOR INDOOR USE
- PROVIDES VOICE CONTINUITY IN DISASTERS--NATURAL OR MAN-MADE
- RELIABLE ASE EQUIPMENT

ASE-MC08 Iridium SatPhone Solution

Shown below are the components that are included with, or needed for the ASE-MC08.



Antenna Solutions

Antennas and cable systems for HQ applications. We recommend our premium filtered for Urban and Hospital environments.

Purchase separately-



Power Brick AC/DC

Reliable AC/DC Power Supply. Please specify Country Type.

Included in the Kit.



Dedicated Phone

We recommend the PT01 with Dialing Instructions. (Can integrate with any office phone.)

ASE PT01



| ASE-MC08 | | |
|---------------------|-----------------|---------------------|
| Voltage | 10-32 VDC | Cable or DC Adapter |
| Power | 12 Watts | Active Peak |
| Antenna Connections | Iridium TNC-F | |
| Operating Temp | -10 to 55 C | |
| Dimensions | 9x 5 x 2.5 in. | 23 x 15 x 13 cm |
| Weight | 2 lbs. | 0.9 kG |
| Shipping Weight | 6.0 lbs. | 3.0 kG |
| Shipping Dimensions | 16 x 14 x 8 in. | 41 x 36 x 20 cm |

IRIDIUM PERMANENT INSTALL SATELLITE PHONE

rev 0.01

ADDITIONAL FEATURES/COMPONENTS



Easy Office Integration

Use with Office Phones

Can integrate with any office.
We recommend the ASE-PT01



-H Local Handset-

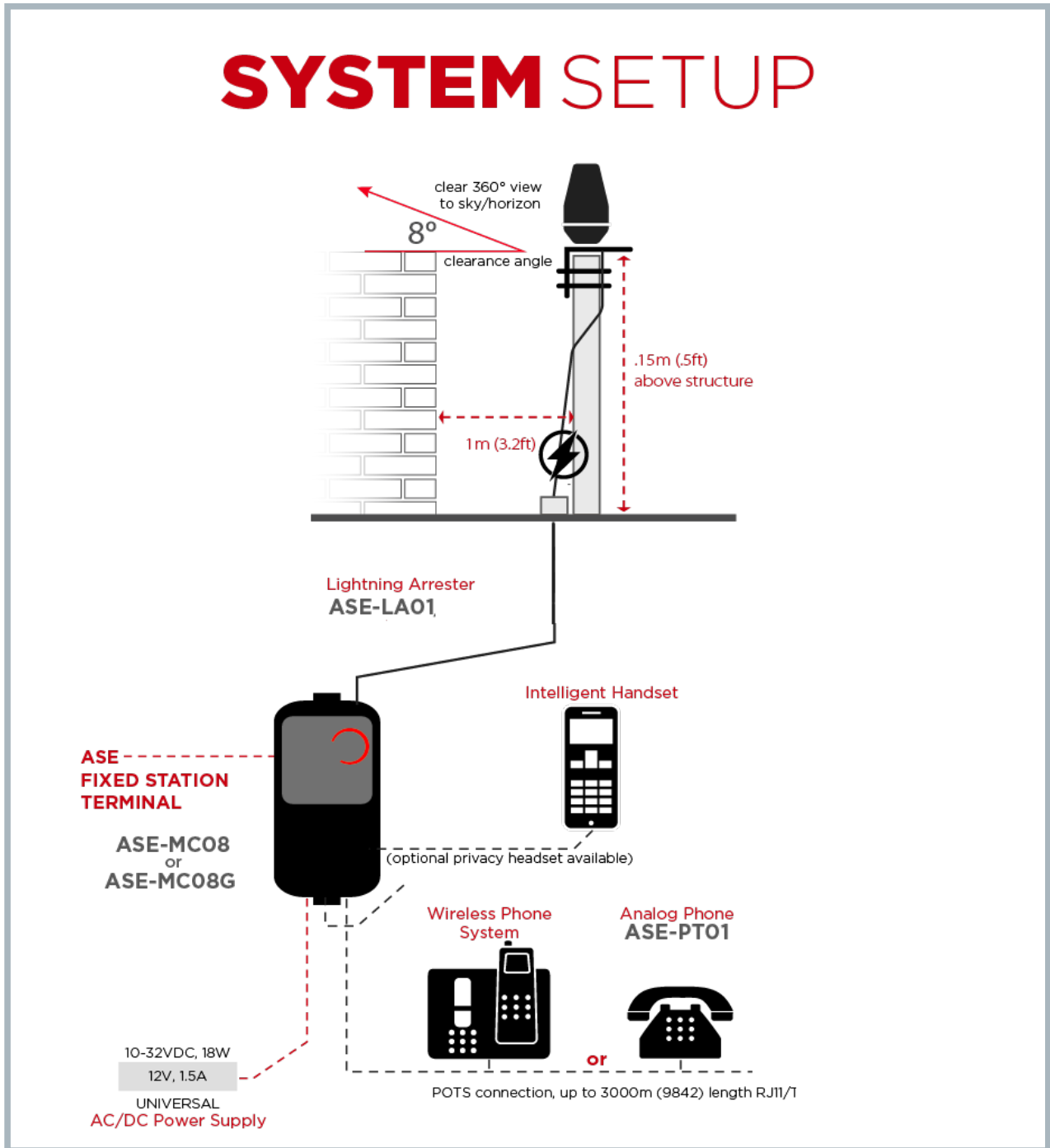
Local Handset available.
Purchase by adding -H
ASE MC08-H



Antennas go the Distance

Passive Antennas up to 20 Meters.Ac-
tive Antennas up to 105M
Antennas not included-
Purchase separately.




EXAMPLE INSTALLATION



MC08 Installation Diagram

MC08 PACKAGES and COMPONENTS

Shipping Information

| | | |
|-------------------|--|---|
| ASE-MC08 | ComCenter II Indoor - fixed station iridium voice terminal |  |
| | Harmonized Code - HTS#: 8517.62.0050 ECCN: 5A992.a Shipping Dimensions: 16 x 14 x 8, 6 LBS (41cm x 36cm x 20cm, 3 kg) | |
| ASE-MC08-H | ComCenter II Indoor - fixed station iridium voice terminal |  |
| | Harmonized Code - HTS#: 8517.62.0050 ECCN: 5A992.a Shipping Dimensions: 16 x 14 x 8, 6 LBS (41cm x 36cm x 20cm, 3 kg) | |
| ASE-PT01 | POTS Station - includes POTS phone, mount plate, and instruction placard |  |
| | Harmonized Code - HTS#: 8518.30.2000 ECCN: EAR99 Shipping Dimensions: 16 x 14 x 8, 5 LBS (41cm x 36cm x 20cm, 2 kg) | |

ASE ANTENNA AND CABLE OPTIONS:



CABLE LENGTHS and ANTENNA OPTIONS:

- ASE-PFA12 - 39' (12 meters) LMR600
 - premium passive filtered antenna, lightning arrester, and mounting bracket
- ASE-PFA20 - 66' (20meters) LMR600
 - premium passive filtered antenna, lightning arrester, and mounting bracket
- ASE-PFA27 - 100' (27 meters) LMR200
 - premium active filtered antenna, lightning arrester, interface box, and mounting bracket
- ASE-PFA40 - 131' (40 meters) RG213
 - premium active filtered antenna, lightning arrester, interface box, and mounting bracket
- ASE-PFA70- 230' (70 meters) LMR400
 - premium active filtered antenna, lightning arrester, interface box, and mounting bracket
- ASE-PFA88 - 289' (88 meters) LMR500
 - premium active filtered antenna, lightning arrester, interface box, and mounting bracket
- ASE-PFA105 - 344' (105 meters) LMR600
 - premium active filtered antenna, lightning arrester, interface box, and mounting bracket
- ASE-FA12 - 39' (12 meters) LMR400
 - passive antenna, and mounting bracket
- ASE-FA20 - 65' (20 meters) LMR600
 - passive antenna, and mounting bracket

Contact ASE

ASE-HEADQUARTERS

16559 N. 92nd Street
Scottsdale, Arizona
85260
USA

Phone +1 480 443 1424

E-mail info@ase-corp.com

ASE-INTERNATIONAL

Galway
Republic of Ireland

Phone +353 85 761 5506

E-mail info@ase-corp.com



www.ase-corp.com

ASE
APPLIED SATELLITE ENGINEERING